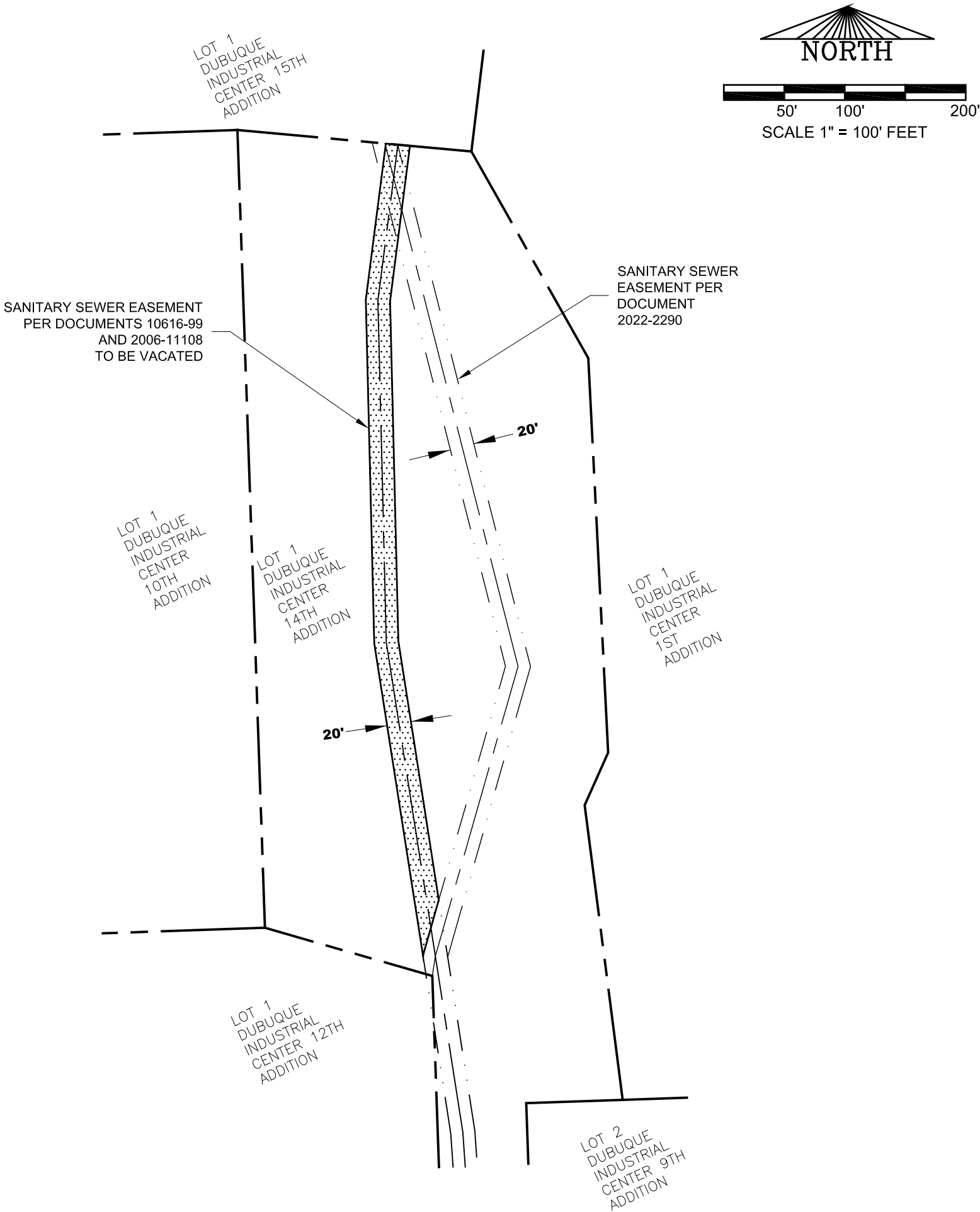
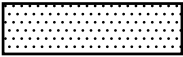


EXHIBIT A
SANITARY SEWER EASEMENT VACATE
WITHIN LOT 1, DUBUQUE INDUSTRIAL CENTER 14TH ADDITION,
IN THE CITY OF DUBUQUE, IOWA

AS ORIGINALLY SHOWN ON PLAT OF SURVEY OF LOTS 1-3 OF DUBUQUE INDUSTRIAL CENTER 12TH ADDITION (DOCUMENT NUMBER 10616-99), AND ALSO ON FINAL PLAT OF LOT 1 OF LOT 3 AND LOT 2 OF LOT 3 OF DUBUQUE INDUSTRIAL CENTER 12TH ADDITION (DOCUMENT NUMBER 2006-11108), IN THE CITY OF DUBUQUE, IA



LEGEND

— — — — —	PROPERTY LINE
— — — — —	CENTERLINE SANITARY EASEMENT
- . . - . . - . . - . .	EDGE SANITARY SEWER EASEMENT
	SANITARY SEWER EASEMENT AREA TO BE VACATED



2007 2012
2013 2017
2019

CITY OF DUBUQUE ENGINEERING DEPARTMENT CITY HALL, 50 WEST 13th STREET DUBUQUE, IA 52001-4864		
PHONE (563) 589-4270	FAX (563) 589-4205	
Drawn By: JJB	Approved By: RNK	Date: 02-23-23
LOT 1 OF DUBUQUE INDUSTRIAL CENTER 14TH ADDITION IN THE CITY OF DUBUQUE, IOWA		
C.I.P. Number:	Sheet Number: 1	of 1